



Noise Monitoring Result

Day Time (0700 - 1900hrs on normal weekdays)

Location: M1a - Footbridge at EX-Wanchai Harbour Road Sports Centre

Date	Time	Weather	Measurement Noise Level			Baseline Level	Construction Noise Level	Limit Level
			Leq	L10	L90	Leq	Leq	Leq
Unit: dB(A), (30-min)								
30/8/2017	09:45	Fine	74.5	76.6	71.6	72	71	75
5/9/2017	13:40	Cloudy	73.6	75.2	71.4	72	68	75
12/9/2017	14:20	Fine	75.1	76.9	72.0	72	72	75
21/9/2017	10:30	Cloudy	75.7	78.1	71.6	72	73	75
27/9/2017	13:35	Fine	76.9	79.1	73.4	72	75	75

Location: M2b - Noon-day gun area

Date	Time	Weather	Measurement Noise Level			Baseline Level	Construction Noise Level	Limit Level
			Leq	L10	L90	Leq	Leq	Leq
Unit: dB(A), (30-min)								
30/8/2017	10:30	Fine	67.4	68.9	65.6	68	67	75
5/9/2017	14:30	Cloudy	67.5	68.8	65.7	68	68	75
12/9/2017	13:25	Fine	67.3	69.1	65.1	68	67	75
21/9/2017	11:15	Fine	68.9	70.4	65.7	68	63	75
27/9/2017	14:25	Fine	66.8	68.3	64.4	68	67	75

Location: M3a - Tung Lo Wan Fire Station

Date	Time	Weather	Measurement Noise Level			Baseline Level	Construction Noise Level	Limit Level
			Leq	L10	L90	Leq	Leq	Leq
Unit: dB(A), (30-min)								
30/8/2017	14:05	Fine	65.1	66.4	63.6	69	65	75
5/9/2017	09:15	Cloudy	67.6	69.9	64.4	69	68	75
12/9/2017	09:00	Fine	65.2	66.8	63.0	69	65	75
21/9/2017	13:50	Fine	64.6	66.1	62.8	69	65	75
28/9/2017	10:00	Fine	65.3	66.4	63.8	69	65	75

Location: M4b - Victoria Centre

Date	Time	Weather	Measurement Noise Level			Baseline Noise Level	Construction Noise Level	Limit Level
			Leq	L10	L90	Leq	Leq	Leq
Unit: dB(A), (30min)								
30/8/2017	14:45	Fine	66.1	67.6	64.3	67	66	75
5/9/2017	09:55	Cloudy	67.4	68.5	65.3	67	51	75
12/9/2017	09:40	Fine	64.8	66.1	63.0	67	65	75
21/9/2017	14:30	Fine	65.9	67.0	64.6	67	66	75
27/9/2017	15:05	Fine	66.8	67.8	63.5	67	67	75

Location: M5b - City Garden

Date	Time	Weather	Measurement Noise Level			Baseline Level	Construction Noise Level	Limit Level
			Leq	L10	L90	Leq	Leq	Leq
Unit: dB(A), (30min)								
30/8/2017	15:30	Fine	71.9	73.0	70.0	68	70	75
5/9/2017	10:45	Cloudy	71.7	72.8	70.6	68	69	75
12/9/2017	10:20	Fine	72.5	74.4	69.6	68	71	75
21/9/2017	15:15	Fine	69.6	70.9	68.1	68	64	75
28/9/2017	10:50	Fine	71.6	73.0	69.6	68	69	75

Location: M6 - HK Baptist Church Henrietta Secondary School

Date	Time	Weather	Measurement Noise Level			Baseline Level	Construction Noise Level	Limit Level
			Leq	L10	L90	Leq	Leq	Leq
Unit: dB(A), (30-min)								
30/8/2017	16:06	Fine	66.5	67.8	64.7	71	67	70
5/9/2017	11:20	Cloudy	66.5	68.5	62.4	71	67	70
12/9/2017	10:55	Fine	66.7	68.1	64.8	71	67	70
21/9/2017	15:50	Fine	65.9	67.6	63.9	71	66	70
28/9/2017	11:25	Fine	65.5	67.1	63.4	71	66	70

Noise Monitoring Result

Day Time (0700 - 1900hrs on normal weekdays)

Location: M7e - International Finance Centre (Eastern End of Podium) (Reference Station)

Date	Time	Weather	Measurement Noise Level			Baseline Level	Construction Noise Level	Limit Level
			Leq	L10	L90	Leq	Leq	Leq
Unit: dB(A), (30-min)								
29/8/2017	10:15	Fine	73.0	77.0	68.1	67	72	N/A
4/9/2017	14:05	Cloudy	68.4	71.1	65.6	67	63	N/A
11/9/2017	14:30	Fine	69.3	70.4	67.8	67	66	N/A
18/9/2017	14:35	Fine	66.3	68.1	63.1	67	66	N/A
26/9/2017	13:45	Fine	65.9	68.3	64.7	67	66	N/A

Location: M7w - International Finance Centre (Western End of Podium)

Date	Time	Weather	Measurement Noise Level			Baseline Level	Construction Noise Level	Limit Level
			Leq	L10	L90	Leq	Leq	Leq
Unit: dB(A), (30-min)								
29/8/2017	09:35	Fine	67.2	68.9	64.1	69	67	75
4/9/2017	14:40	Cloudy	67.1	69.0	64.0	69	67	75
11/9/2017	15:05	Fine	67.1	68.7	64.3	69	67	75
18/9/2017	15:10	Fine	64.8	66.2	62.6	69	65	75
26/9/2017	13:10	Fine	66.6	68.2	64.0	69	67	75

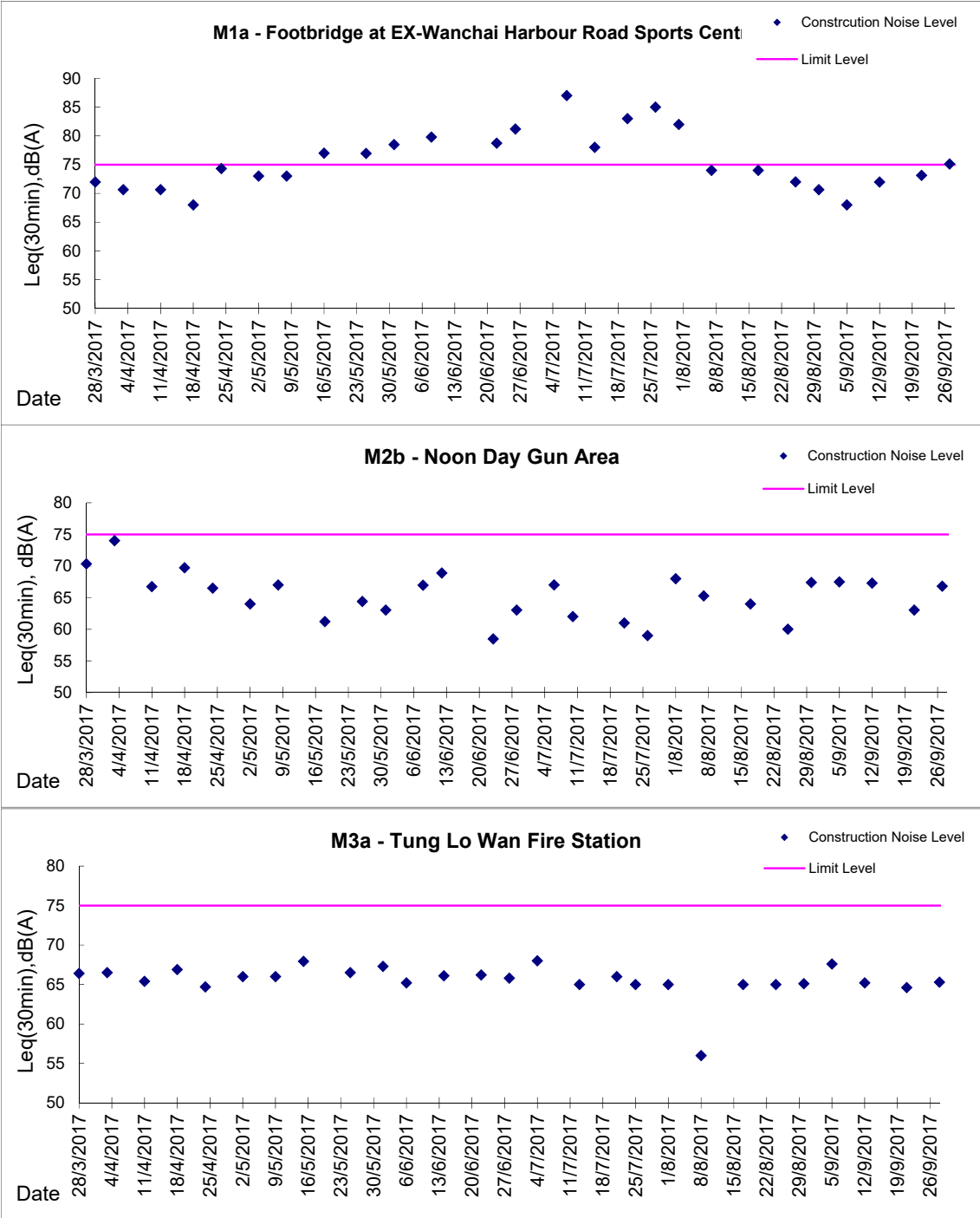
Location: M8 - City Hall

Date	Time	Weather	Measurement Noise Level			Baseline Level	Construction Noise Level	Limit Level
			Leq	L10	L90	Leq	Leq	Leq
Unit: dB(A), (30-min)								
29/8/2017	11:15	Fine	58.7	60.7	56.1	64	59	70
4/9/2017	10:05	Cloudy	60.6	63.0	57.2	64	61	70
11/9/2017	13:45	Fine	58.6	60.4	56.1	64	59	70
21/9/2017	09:45	Cloudy	59.0	61.2	55.7	64	59	70
26/9/2017	14:45	Fine	59.1	61.3	55.4	64	59	70



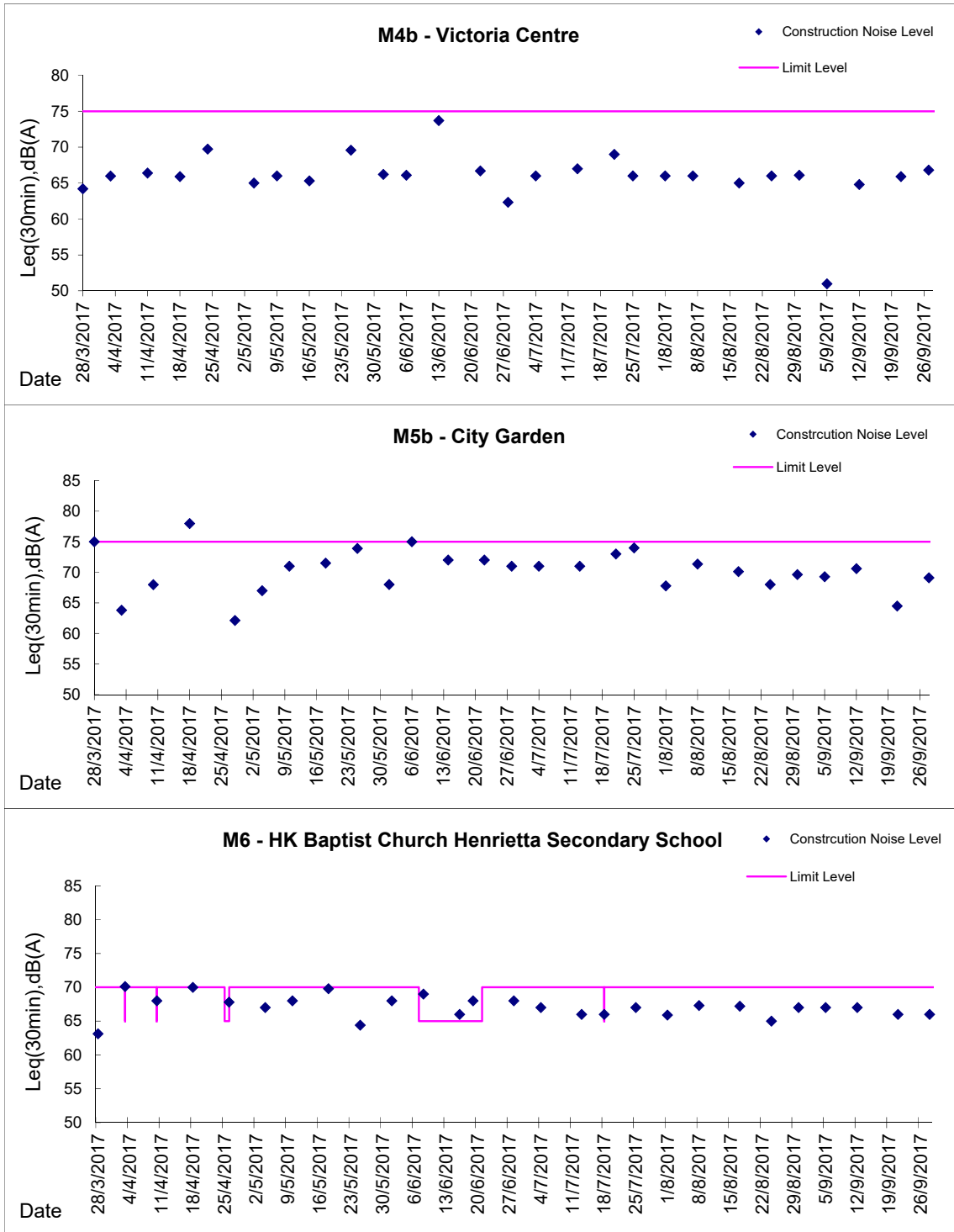
Graphic Presentation of Noise Monitoring Result

Day Time (0700 - 1900hrs on normal weekdays)



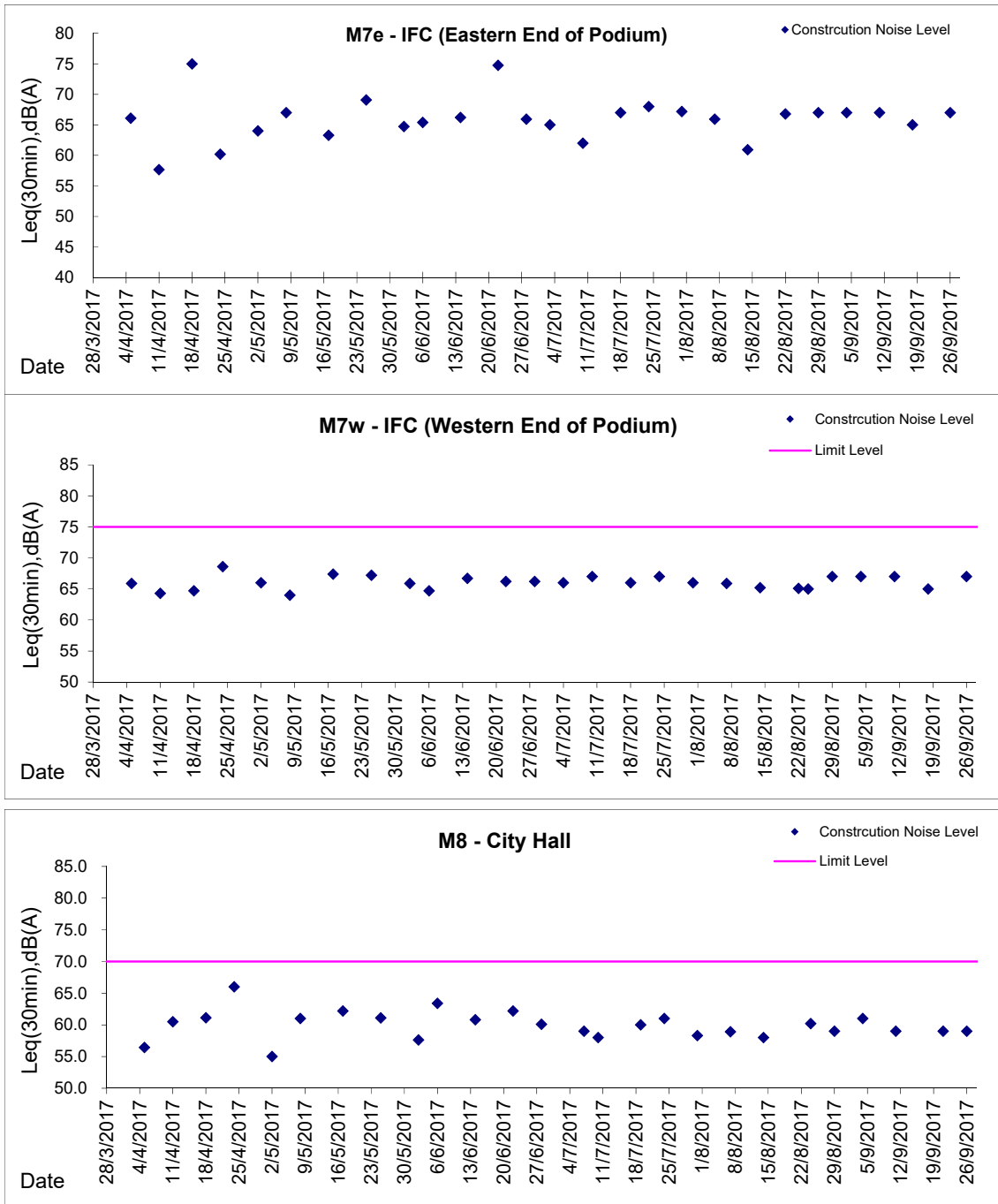
Graphic Presentation of Noise Monitoring Result

Day Time (0700 - 1900hrs on normal weekdays)



Graphic Presentation of Noise Monitoring Result

Day Time (0700 - 1900hrs on normal weekdays)



* Remark: M7e - IFC (Eastern End of Podium) is a reference monitoring station